



# Bringing a Mac Admin Mindset to Managing Windows Endpoints



# Us

Adam Ankiewicz  
Lead IT Endpoint Engineer  
he/him/his



@aankiewicz





# Us

Rebecca Latimer  
IT Endpoint Engineer II  
she/her

 @rebelati



# Agenda

**01** Who

**02** Why

**03** What

**04** How





# Who is this for?



WHO?

# Who is this for?

You, if you consider yourself a Mac Admin that has been thrown into the fires of Windows management without a lot of knowledge. Hopefully it will be helpful, especially for those very new to Windows.



WHO?

# Who is this NOT for?

You, if you consider yourself an expert in Windows management. There are surely some things we have missed!



WHO?

# Who are we?

A couple of Apple geeks that were tasked with bringing our Windows fleet up to the standard that we have for our macOS machines. We are not Windows experts by any means!







# Why?



This is why.

**Your finance  
people will love  
you.**



## **Really though...**

There are certain applications where Windows really is better, like it or not.



## Excel: An Example

- PowerPivot not supported
- No pivot charts for pivot tables
- Quick Access Toolbar doesn't support importing
- VBA macros don't have as many features



## **But do you REALLY need Windows?**

Maybe not! There are other options out there. VMs are a thing. Appstream can be used to “stream” Windows applications through AWS.



Why?

**Why not just hire  
a Windows guru?**





# What is a Mac Admin Mindset?



**We value simplicity.**

**We practice curiosity.**

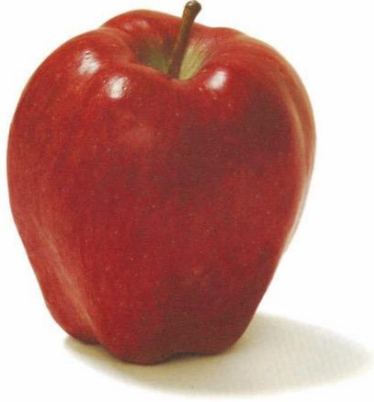
**We strive for perfection.**





MAY 5 1978

**Simplicity  
is the  
ultimate  
sophistication.**



**Introducing  
Apple II,  
the personal  
computer.**

WHAT?

# Simplicity

Manage as little as possible, checking all required boxes for security and compliance, while staying out of the user's way.



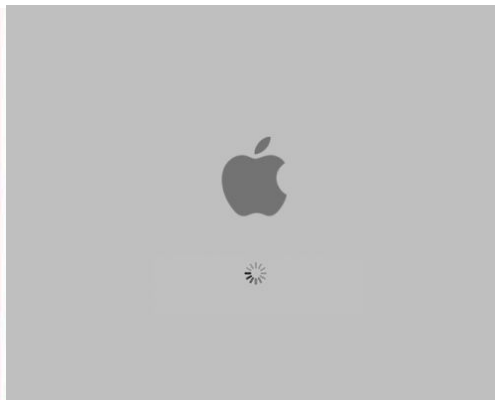


WHAT?

# Curiosity

Mac admins start as Mac users. We have a simple user interface that rewards a curious user.





WHAT?

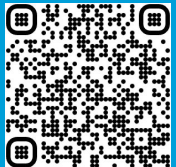
# Perfection

We want the end user experience to be as close to perfect as possible.





**What do you  
value in macOS?**





# What About Windows?



WHAT?

# Windows is Messy

Being curious about Windows is hard. Licensing and management are anything but simple. We can do our best to make it easier, but it will never be at the level of macOS perfection





## Learning Windows

Learning Windows is really difficult, because Windows training is meant for Windows users. There are a ton of guides out there for Windows > macOS but not so much the other way around.



Hexnode

<https://www.hexnode.com> › blogs › switching-from-p...

### Switching from PC to Mac: Everything IT admins need to ...

Jan 13, 2022 — Typically, for **managing Windows** PCs, IT **admins** have depended on binding the devices to directory services like Active Directory. This grants ...



N-able

<https://www.n-able.com> › events › boot-camp-managi...

### Managing Macs for the Windows Admin (Part 2: Advanced)

Aug 3, 2023 — Installing and configuring applications; Staying on top of patches and updates; Securing and protecting your users' data; Troubleshooting when ...

<https://www.n-able.com> › Blog › Mac Support

### An Admin's Guide to Mac Device Management

Aug 16, 2022 — Need to configure a fleet of **Macs** for your customer or business? This blog talks you through the process.



MakeUseOf

<https://www.makeuseof.com> › Mac

### The 6 Best Mac Window Management Tools

Apr 5, 2023 — The 6 Best **Mac Window Management** Tools · 1. Magnet · 2. BetterSnapTool · 3. Rectangle · 4. Amethyst · 5. Veer · 6. Swish · 7. Moom.



Addigy

<https://addigy.com> › blog › how-to-support-mac-devi...

### How to Support Mac Devices When You're a Windows Admin

Aug 3, 2020 — How to Support **Mac** Devices When You're a **Windows Admin** · Addigy's Apple Device Management Solution Is Built for IT Admins · How Windows Has Been ...



Computerworld

<https://www.computerworld.com> › article › review-sof...

### Review: Four ways to manage Macs in a Microsoft world

Nov 7, 2016 — Included is a Home Mover utility that moves the **MacOS** user's home directory reference point to something that the Active Directory **admin** ...



# How to Windows?





HOW?

# Step One - Hardware

- When in doubt, get Lenovo
  - Rugged
  - Good warranties
  - Most Apple-like
- Make sure RAM meets your needs (32GB was right for us)
- Consider the extended warranty if you aren't buying through a reseller
- Consider biometrics



HOW?

## Step Two - Licensing

There could be a whole presentation just on this.

- Most orgs use Microsoft 365 Enterprise E3 - this includes Intune, Azure, Windows, and Office
- <https://m365maps.com/> is a good-ish resource



HOW?

## Step Three - Management

Some different endpoint management options:

- Intune (what we use)
- JumpCloud
- WorkspaceOne

What about SCCM? (Microsoft System Configuration Manager)

- SCCM vs MDM (or on top of MDM)



HOW?

## Step Four - Configuration

We manage our configuration just like we do with macOS

- Profiles
- App installations
- Scripts





# Windows Concepts



# Translating Mac to Windows

macOS	Windows
Plists	Registry
PKGs	MSIs
Automated Device Enrollment	Autopilot
One source for hardware	A plethora of sources for hardware
Bash/Shell/Zsh Scripts	Powershell/Batch Scripts
Niche community support	Lots of support (but no community)
Unreliable updates	Surprisingly reliable updates



# macOS Plists ~ Windows Registry

macOS	Windows
/Library/Preferences	HKEY_CLASSES_ROOT
~/Library/Preferences	HKEY_CURRENT_USER
/System/Library	HKEY_LOCAL_MACHINE
All user library preference folders	HKEY_USERS
Current running config	HKEY_CURRENT_CONFIG



# Packaging

- Not dissimilar to macOS packaging
- MSIs, similar to PKGs, are usually supplied by the vendor
- Advanced Installer can create and manipulate packages
- Other types of packages are out there:
  - Win32
  - UWP (may or may not be deprecated)
  - MSIX
  - EXE
- For simplicity's sake, we only use MSIs





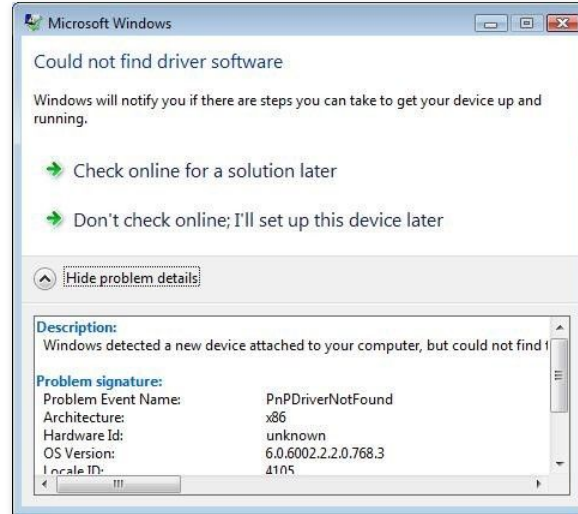
# Autopilot

- Microsoft's answer to zero-touch
- Have to be added to MDM just like Automated Device Enrollment
- Purchase from a Microsoft Partner
- Make sure device is online
- Set up Autopilot options in Intune



# Hardware

- You WILL have to troubleshoot hardware issues on Windows devices
- Windows Discod is a good place for advice
- Beep codes are different between BIOS manufacturers





# Powershell

- Like bash (built in)
- Can be deployed through Intune, just like you use bash scripts in you Mac MDM
- Good for things you can't set through GUI

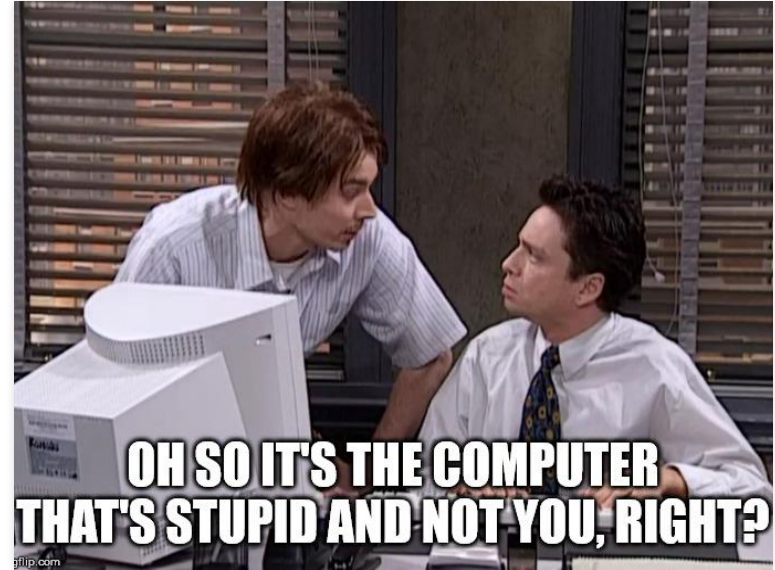


# Windows Community

- Not the same feel as the Mac community
- Curiosity is NOT rewarded
- There is a Windows Discord, but it is mainly focused on home users



# macOS vs Windows Community



# Managing Updates

Somehow actually better in Windows!

Set up update rings and THEY ACTUALLY WORK

Updates werden verarbeitet  
30 % abgeschlossen  
Schalten Sie den Computer nicht aus.



# Do I need ~~Azure~~ ~~AD~~ Entra ID?

It depends. Maybe. You can most likely get away with federating Office 365 with Okta so that the Okta sign-in gives access to Microsoft.





Next steps

**With a Mac Admin  
mindset, you can  
manage **any**  
endpoints.**



Remember:

**Simplicity**  
**Curiosity**  
**Perfection**

**Show me  
your managed  
Windows endpoints**

**Show me your  
managed Windows  
endpoints after  
watching this session**

**Perfection**

imgflip.com



#### TEAM

Rebecca Latimer, Adam Anklewicz

#### CONTACT INFO

rlatimer@thumbtack.com, aanklewicz@thumbtack.com

#### RESOURCES

[Github Repo](#)

